



# The Rocky Mountain Series



*Single Section and Sectional Homes*





# Standards and Specifications

For over **30** years, **SRI** has been providing Canadian families with **attractive affordable housing** that now totals over **25,000** homes. Not only is your **SRI Home** warranted for one year on materials and workmanship, your **SRI home** also carries a **10 year structural warranty**.

## Exterior

- \* Vinyl Siding and Corners
- \* Colour Coordinated Painted Wood Fascia
- \* Fibreglass Shingles
- \* 3.5/12 Pitch Roof (Single Wides)
- \* 2.8/12 Pitch Roof (Sectionals)
- \* 32" Insulated Steel Exterior Doors with Peepholes and Deadbolts
- \* 2x6 Exterior Walls with "Rigid Lam"
- \* Engineered Roof Trusses
- \* Exterior GFI at Front Door
- \* Exterior Frost Free Tap
- \* Coach Lights at All Exterior Doors
- \* Insulation Values = R-44 in Ceiling, R-22 in Side Walls and R-28 in Floors
- \* PVC, Low E Windows complete with Screens
- \* Separate Receptacle for Heat Tape
- \* Snowload = 3.5 KPa
- \* 8" tubular steel frame

## Interior

- \* Decorative Vinyl Covered Drywall
- \* Decorative Glass Divider Wall (Most Models)
- \* 5/8" Subfloor-Glued, Nailed and Screwed
- \* Upgrade Carpeting in Living Room and Master Bedroom
- \* Quality Vinyl Floor Covering Elsewhere
- \* Venetian Blinds on all windows
- \* Satin Platinum Hardware, Lighting and Plumbing Fixtures
- \* White Receptacles and Light Switches
- \* Ceiling Lights in all Bedrooms and Living Room
- \* Solid Shelving in all Closets

## Kitchen

- \* 18 cu. ft. Frost Free Refrigerator
- \* 30" Electric Range with Clock and Timer
- \* 2-Speed White Rangehood Fan with Light-Vented to Exterior
- \* White Appliances - Black Optional
- \* Monterrey Modular Cabinets with Backs
- \* Laminated Countertops with 4" Laminated Backsplash with bullnose
- \* Microwave Cabinet with Separate Circuit
- \* Double Stainless Steel Sink
- \* Single Lever Faucet with Vegetable Sprayer
- \* Standard Phone Jack - Kitchen Area

## Bathroom

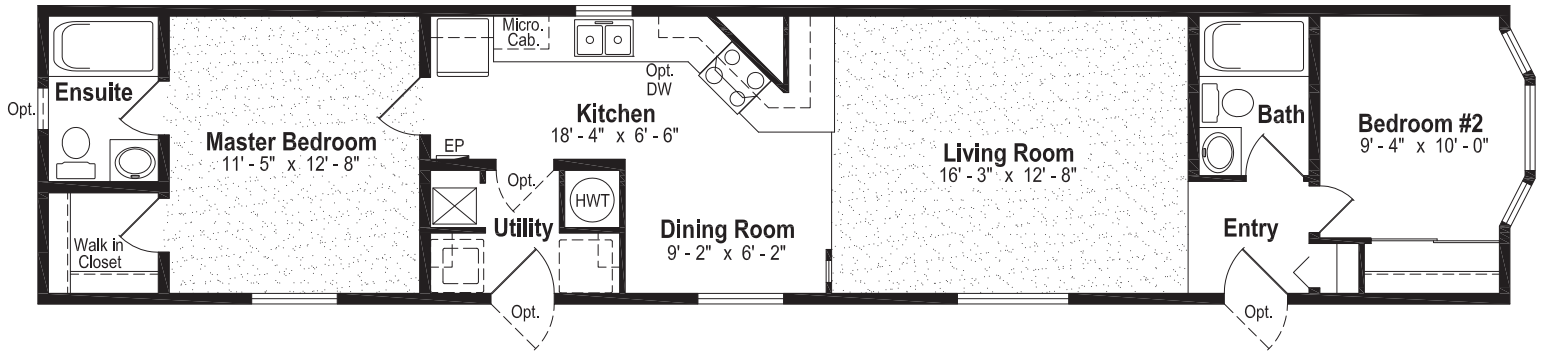
- \* Walled Tub/Shower Complete with Single Lever Pressure Balance Faucet in All Bathrooms
- \* Shower Head, Shower Rod and Shower Curtain included in all Baths
- \* Exhaust Fan complete with Humidistat in Main Bath
- \* Exhaust Fan in Ensuite on Separate Switch
- \* Cosmetic box in Main Bath
- \* Hollywood Light Fixture in all Baths
- \* Single Lever Faucets in all Baths
- \* GFI Receptacle

## Utilities

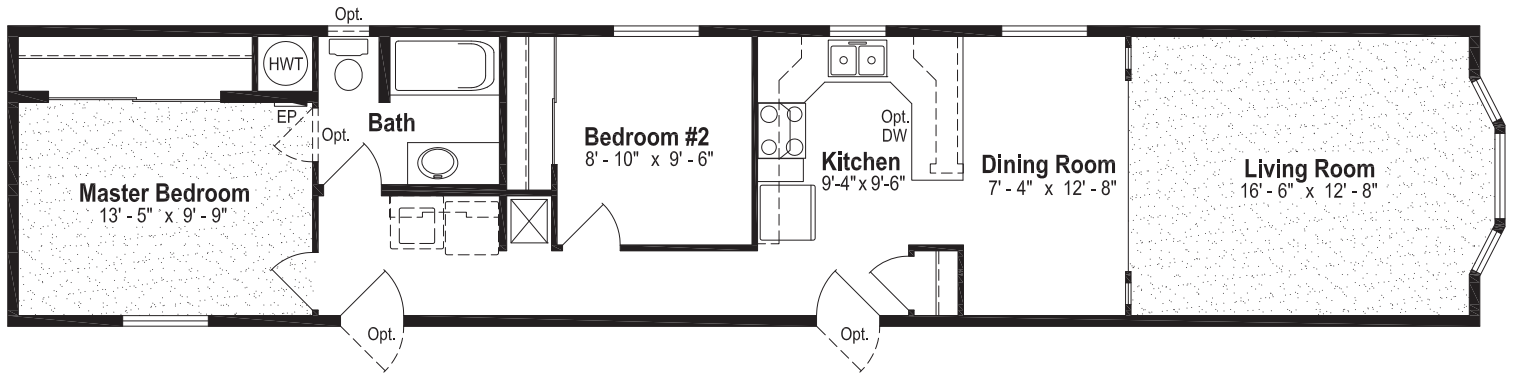
- \* 33 Imperial Gallon (40 U.S. Gallon) Electric Water Heater
- \* High Efficiency Natural Gas Furnace with Electronic Ignition
- \* Electric Smoke/CO2 Detector(s)
- \* Dryer Vent Rough In
- \* 100 amp. Service Panel
- \* Electric Conduit through Floor

# The Rocky Mountain Series

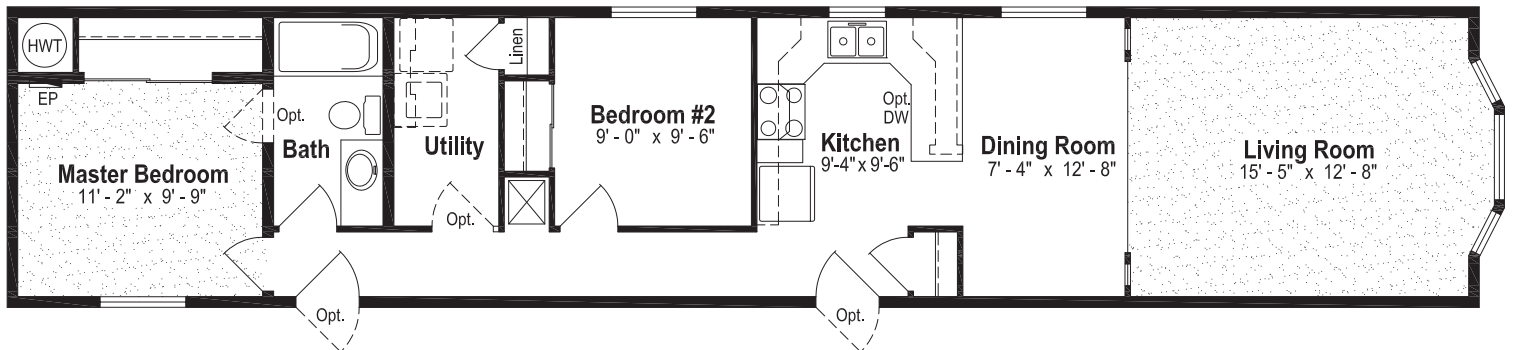
RM-301A, 14' x 67', 938 sq. ft.



RM-303A, 14' x 67', 938 sq. ft.

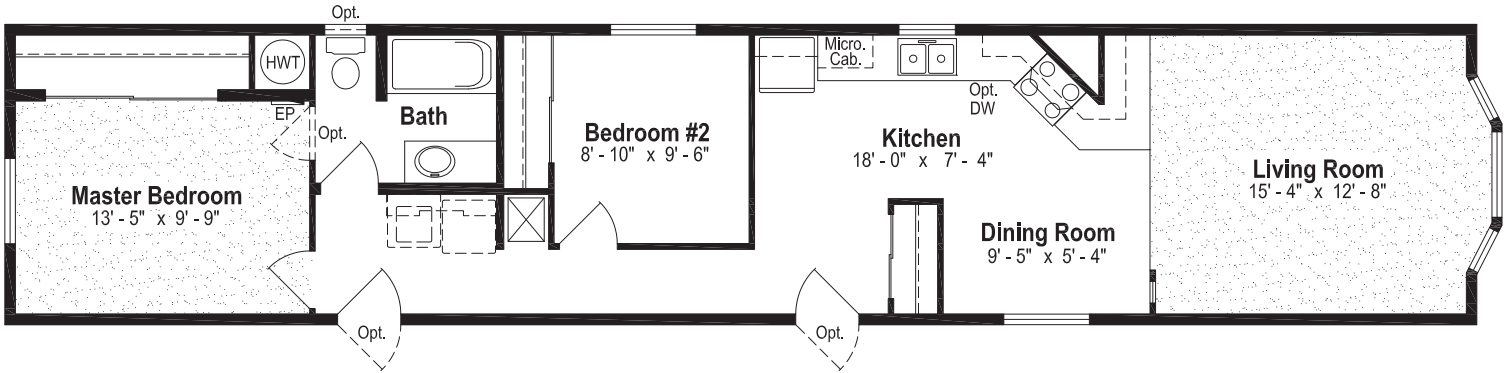


RM-303C, 14' x 67', 938 sq. ft.

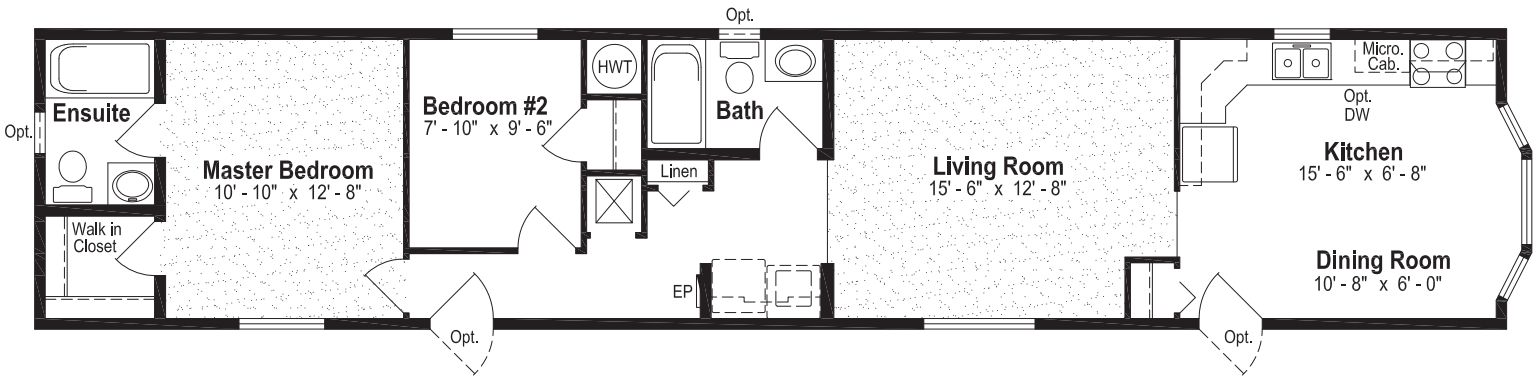


# The Rocky Mountain Series

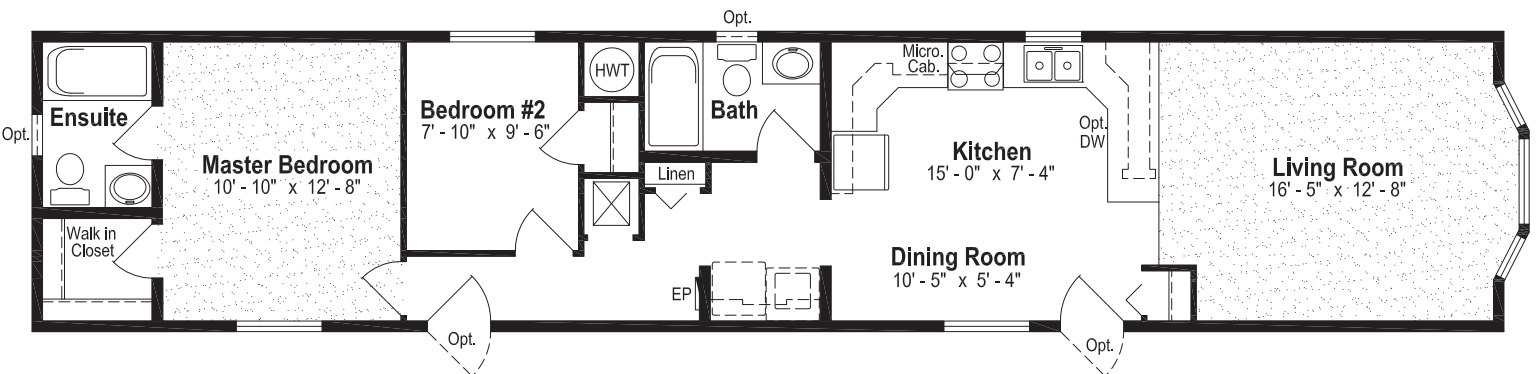
RM-307A, 14' x 67', 938 sq. ft.



RM-319A, 14' x 67', 938 sq. ft.

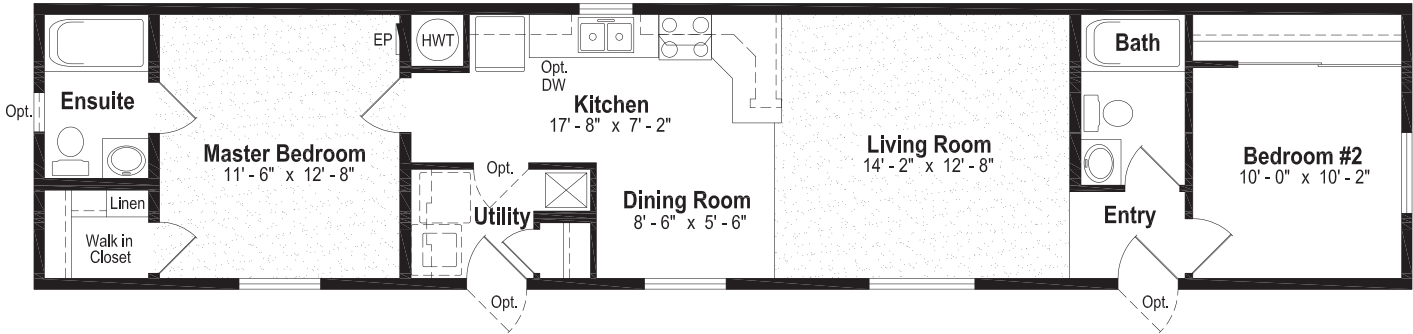


RM-321A, 14' x 67', 938 sq. ft.



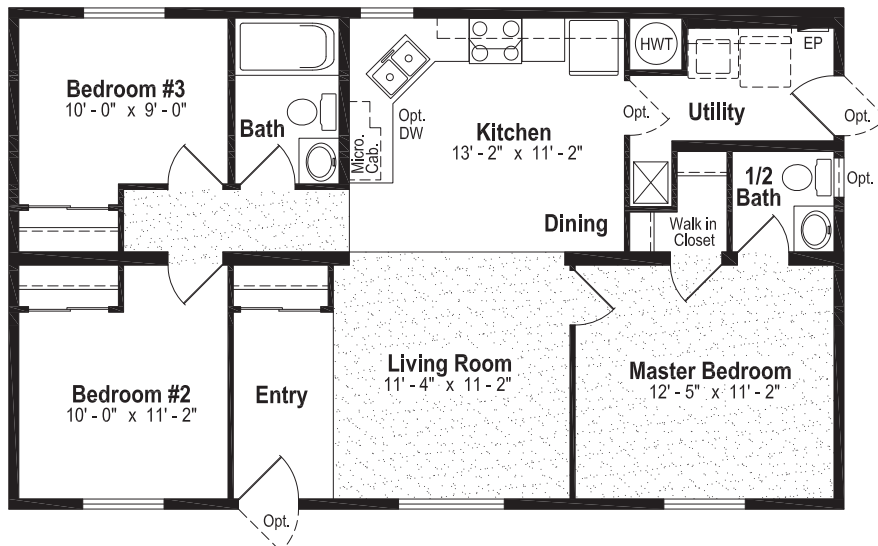
# The Rocky Mountain Series

RM-323A, 14' x 66', 924 sq. ft.



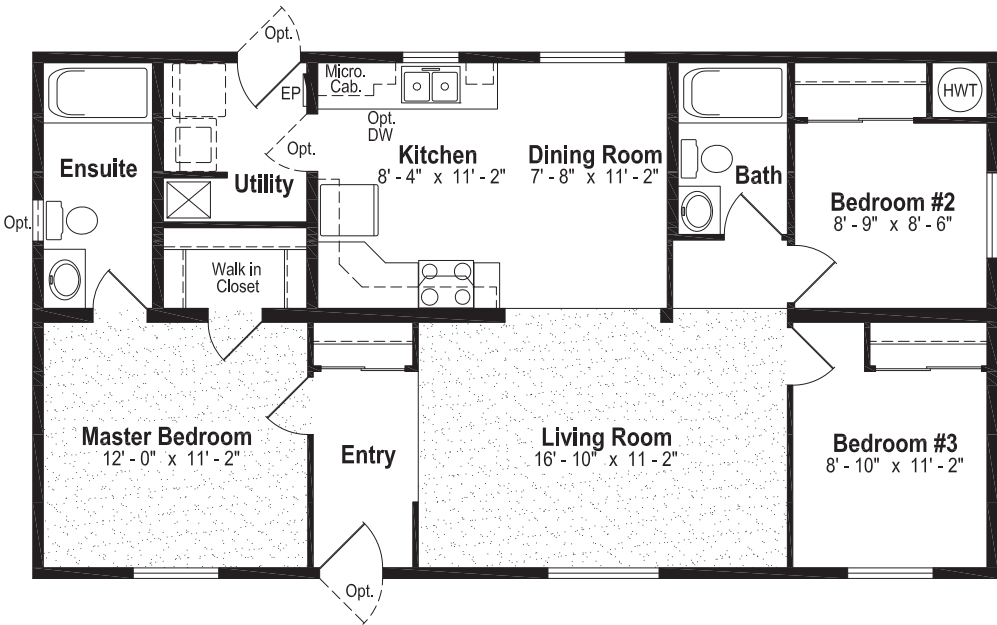
The RM-503A shown with some optional features

RM-501A, 24' x 40', 960 sq. ft.

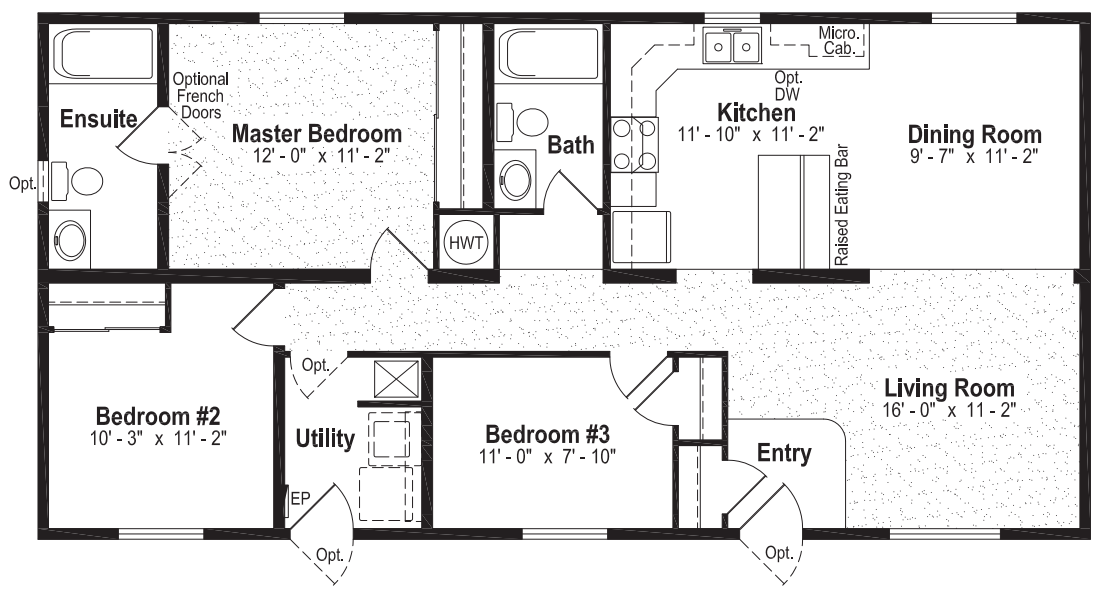


# The Rocky Mountain Series

RM-503A, 24' x 44', 1,056 sq. ft.



RM-505A, 24' x 44', 1,056 sq. ft.



Every home owner has different and unique requirements, so SRI offers design and decor options that reflect the current decorating trends and your personal taste.

### Exterior

- Storm Doors
- Euro and Century Pillars
- Diamond Cut Ceilings
- Three and Four Light Bay Windows
- Palladian Windows
- Octagon Windows
- Acrylic Block Windows
- Angle Corner Window
- White or Pewter Lattice in Windows
- Skylights
- Garden, Cottage or Patio Doors
- Exterior Door with Half Round, 9 Lite or Franklin Insert
- Turbine Vents
- Electric Door Chimes
- Exterior Recessed Pot Light(s)
- Extra Exterior GFI
- High Snow Load Roof

### Interior

- Fully Finished Drywall
- Laminate Flooring
- Upgrade Vinyl Floor Coverings
- Berber Carpeting
- Chair Rail
- French Doors
- Mirrored Closet Doors
- Freezer Cabinets
- Soak Sink with Cabinet
- Utility Room Door
- Ceiling Fan with Lights
- Chandeliers
- Recessed Fluorescent Lights
- Archways

### Utilities

- Gas Fireplace c/w Fan
- Forced Air Electric Furnace
- Air Conditioner-Ready Furnace
- Washer and Dryer
- Stacking Washer and Dryer
- Central Vacuum System
- Roughed in for Central Vacuum
- 200 Amp Service Panel
- Extra Telephone Jack(s)

### Kitchen

- Shaker or Montana style Cabinet Doors
- Raised Panel PVC Cabinet Doors
- Upper Glass Cabinet Doors
- Island Work Centre
- Appliance Garage
- Planning Centre
- Lazy Susan
- White or Black Silgranite Sink
- Oak or Maple Counter Edging
- Corian Executive Counter Edging
- Built-In Dishwasher
- Combination Microwave/Range Hood
- Eye Level Oven and Cook Top Range
- Self Cleaning Range
- Two Door Side by Side
- Free Standing Bottom Mount Refrigerator

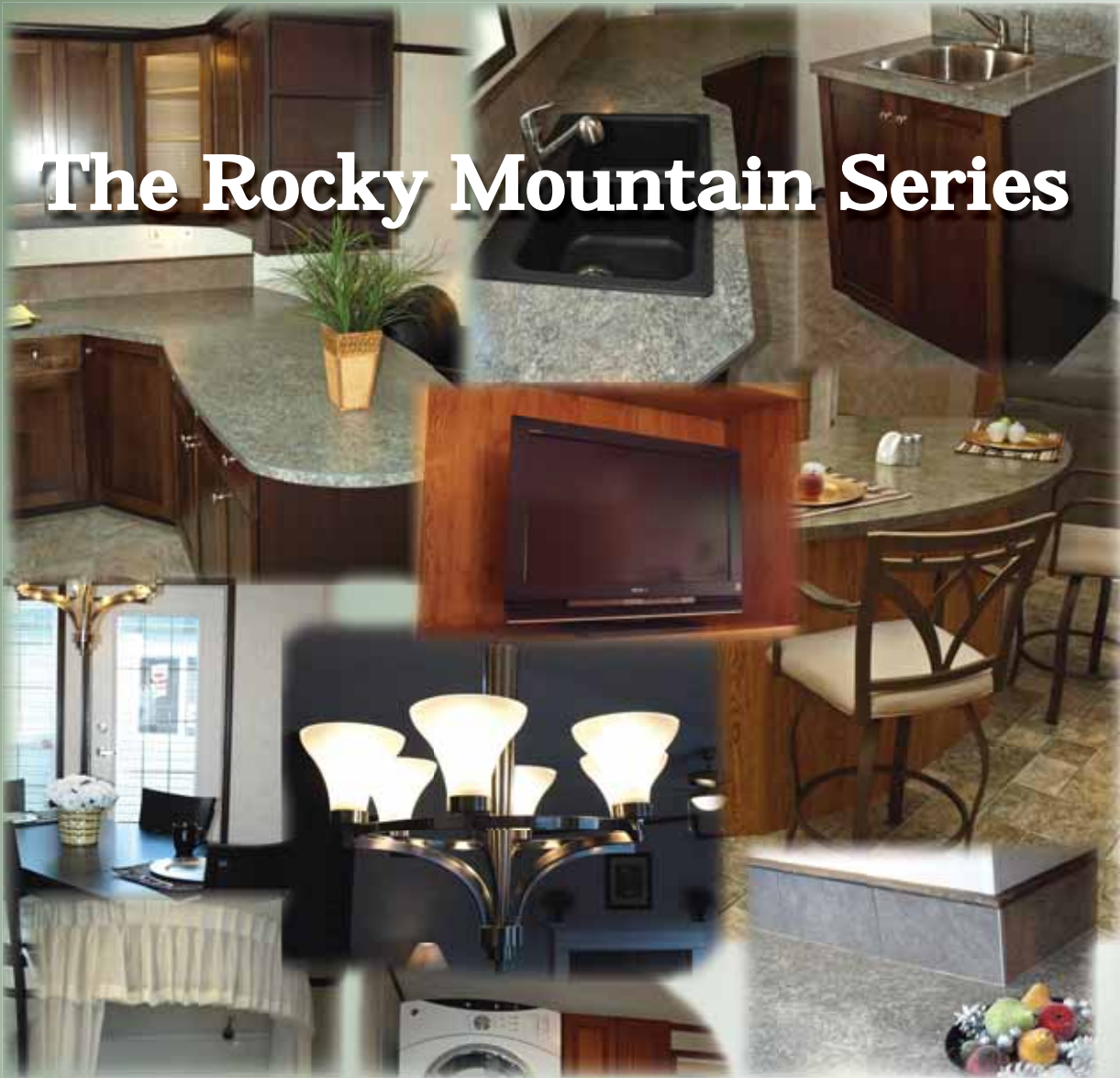
### Bathroom

- Corner Oval Jetted Tub
- 60" Shower c/w Glass Doors
- Handicap Toilet
- Tri-Mirror Medicine Cabinet
- Grab Bars
- Deluxe Shower Curtain
- Banjo Countertop on Vanity
- "ENERGUIDE" Energy Packages



## Optional Features





# The Rocky Mountain Series



**Authorized Retailer:**

Tarnow Homes  
 2800 TransCanada Highway  
 Mailing Address: 15 - 2261 SW 10th Avenue  
 Salmon Arm, BC V1E 1E5 Canada  
 Phone: (250) 832-9500 Fax: (250) 832-9560  
[www.tarnowhomes.com](http://www.tarnowhomes.com)

**131 Stubb Ross Road . Lethbridge . Alberta T1K 7N3**

**[www.regenthomes.ca](http://www.regenthomes.ca)**