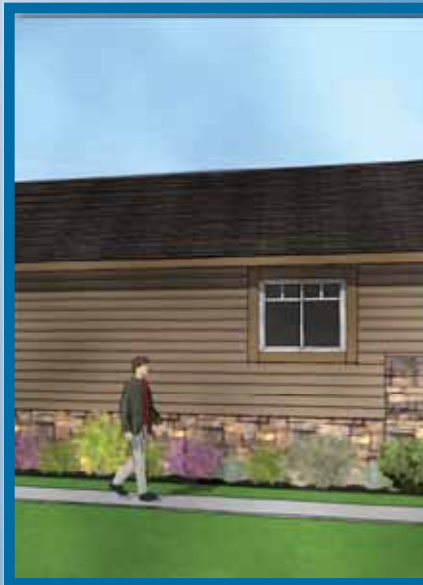




# Saville Chateau



Sectional Homes





# Standard Specifications

For over 30 years, SRI has been providing Canadian families with attractive affordable housing that now totals over 25,000 homes. Not only is your SRI Home warranted for one year on materials and workmanship, your SRI home also carries a 10 year structural warranty.

## Exterior

- \* Maintenance Free Vinyl Siding and Trim
- \* Attractive Residential Eaves
- \* Colour Coordinated Wood Fascia and Window Trim
- \* Long Life Shingled Roof
- \* Third Gable over Living Room Window complete with Shakes and Knee Brace Accent
- \* 4/12 Pitch Roof (Nominal)
- \* 18" Residential Eaves on Sides and 16" on Ends
- \* 6 Panel Insulated Steel Exterior Doors with Peephole and Deadbolt
- \* Storm Doors
- \* 2x6 "Rigid Lam" Exterior Walls
- \* 2x8 Floor Joists - 16" o.c.
- \* 2x10 Floor Joists - 16" o.c. - Foundation Models
- \* Engineered Roof Trusses
- \* Weatherproof Outside Receptacle protected with GFI at Front Door
- \* Exterior Frost Free Tap complete with Check Valve
- \* Coach Lights at All Exterior Doors
- \* PVC Windows complete with Screens
- \* Separate Receptacle for Heat Tape

## Interior

- \* Cathedral Ceiling Throughout
- \* Decorative Vinyl Covered Drywall
- \* Attractive Residential Textured Ceiling
- \* Insulation Values = R-34 in Ceilings, R-20 in Side Walls and R-28 in Floors
- \* 5/8" Subfloor - Glued, Nailed and Screwed
- \* Upgrade Carpeting in Living Room, Master Bedroom and Hall
- \* No Wax Quality Vinyl Floor Coverings
- \* Satin Platinum Hardware, Lighting and Plumbing Fixtures
- \* Colour Coordinated Window Coverings with 2" Venetian Blinds
- \* Solid Closet Shelving
- \* White Receptacles and Light Switches
- \* Washer/Dryer Cabinets with Wire Shelf
- \* Ceiling Lights in all Bedrooms

## Kitchen

- \* 18 cu. ft. Frost Free Refrigerator
- \* 30" Electric Range with Clock and Timer
- \* 2-Speed White Rangehood Fan with Light - Vented to Exterior
- \* White Appliances - Black Optional
- \* Modular Cabinets with Backs and Shaker Style Doors
- \* Adjustable Shelves in all Upper and Lower Cabinets
- \* Roller Slides on all Drawers
- \* Crown Moulding on Kitchen Cabinets
- \* Laminated Countertops with 6" Backsplash
- \* Single Lever Faucet with Vegetable Sprayer
- \* Microwave Cabinet with Separate Circuit
- \* Double Stainless Steel Sink
- \* Plumbed and Wired for Dishwasher
- \* Light in Walk-In Pantry

## Bathroom

- \* Walled Tub/Shower Complete with Single Lever Faucet
- \* Pressure Balanced Faucet in All Bathrooms
- \* Shower Head included in All Baths
- \* Shower Rods and Shower Curtain Liners
- \* Laminated Countertops with 4" Backsplash
- \* Exhaust Fan complete with Humidistat in Main Bath
- \* Exhaust Fan in Ensuite on Separate Switch
- \* Cosmetic Box in Main Bath
- \* 3 Bulb Deluxe Light Fixture in All Bathrooms
- \* Single Lever Faucet at Vanity
- \* GFI Receptacle

## Utilities

- \* Convertible 33 Imperial Gallon (40 U.S. Gallon) Gas Water Heater
- \* High Efficiency Natural Gas Furnace with Electronic Ignition
- \* Life Saving Smoke Detector(s)
- \* Plumbed and Wired for Washer & Dryer
- \* 100 amp. Service Panel
- \* Electrical Conduit through Floor
- \* Built to Applicable Provincial Codes

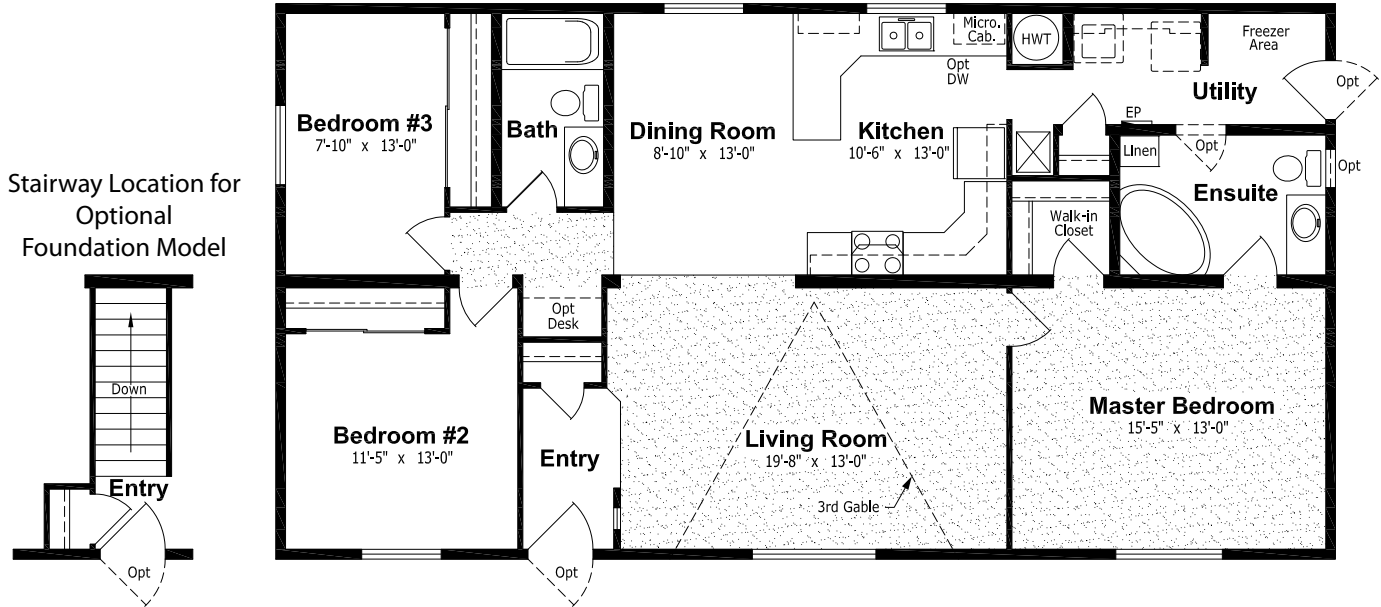


# Saville Chateau

**SS-800A**

27'-6" x 52', 1,430 Sq. Ft.

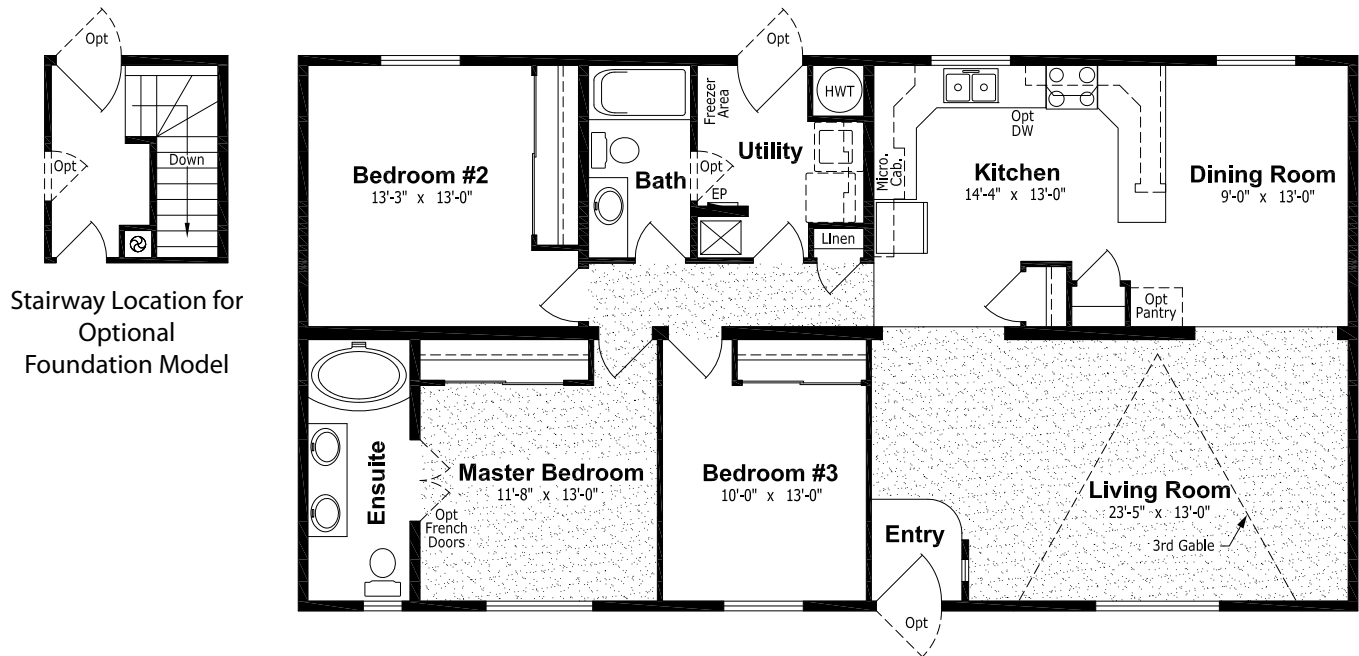
Optional Foundation Model



**SS-802A**

27'-6" x 52', 1,430 Sq. Ft.

Optional Foundation Model



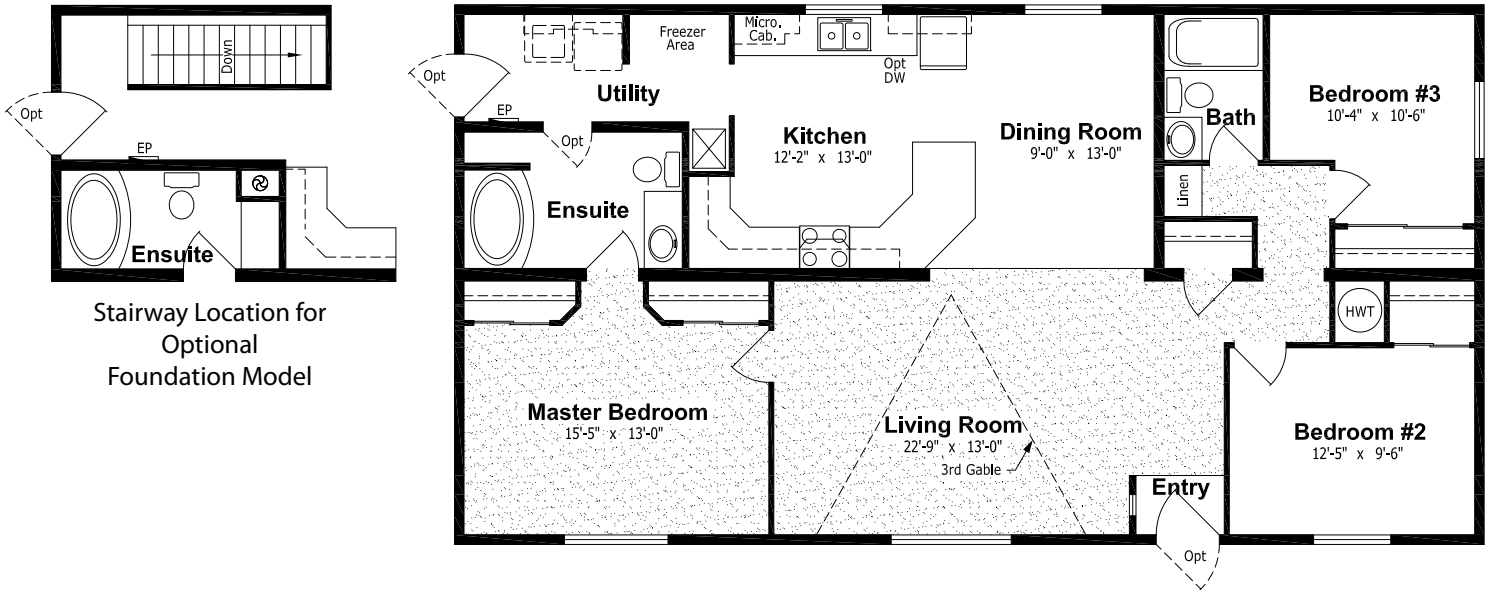
# Saville Chateau



## SS-804A

27'-6" x 52', 1,430 Sq. Ft.

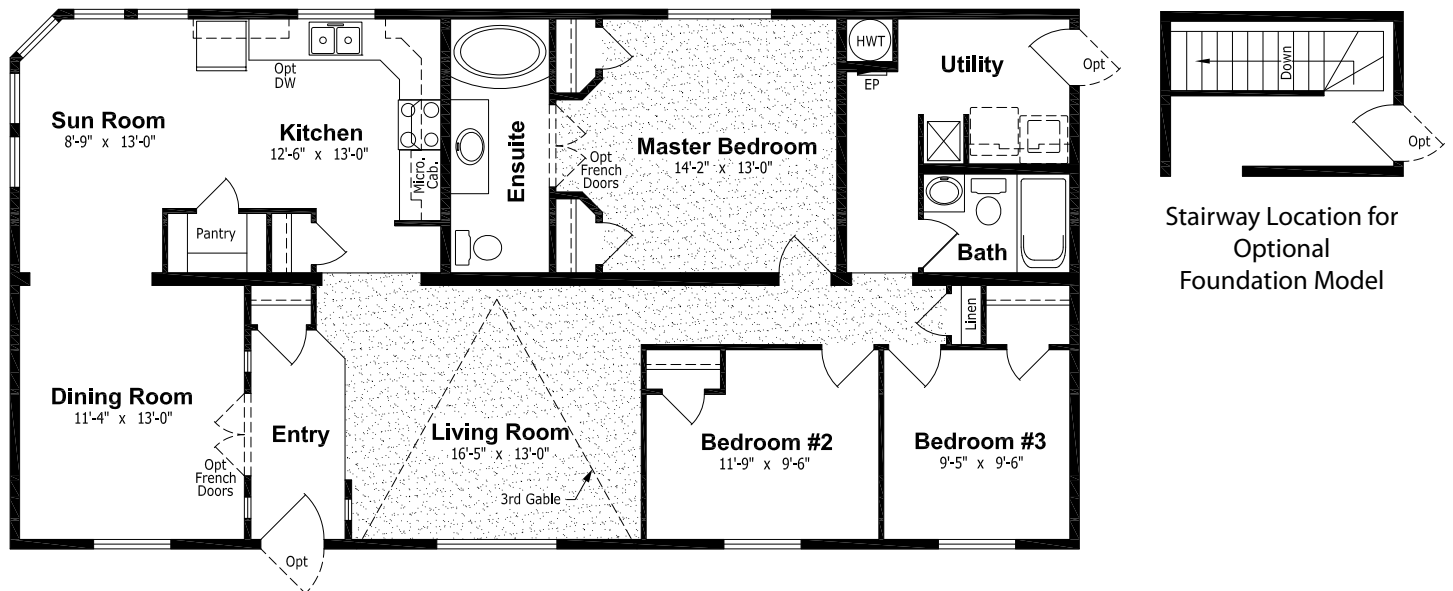
Optional Foundation Model



## SS-806A

27'-6" x 54', 1,485 Sq. Ft.

Optional Foundation Model



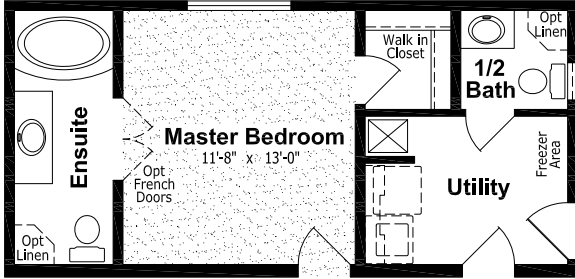


# Saville Chateau

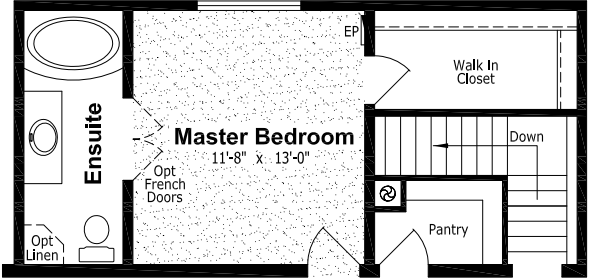
**SS-810A**

27'-6" x 60', 1,650 Sq. Ft.

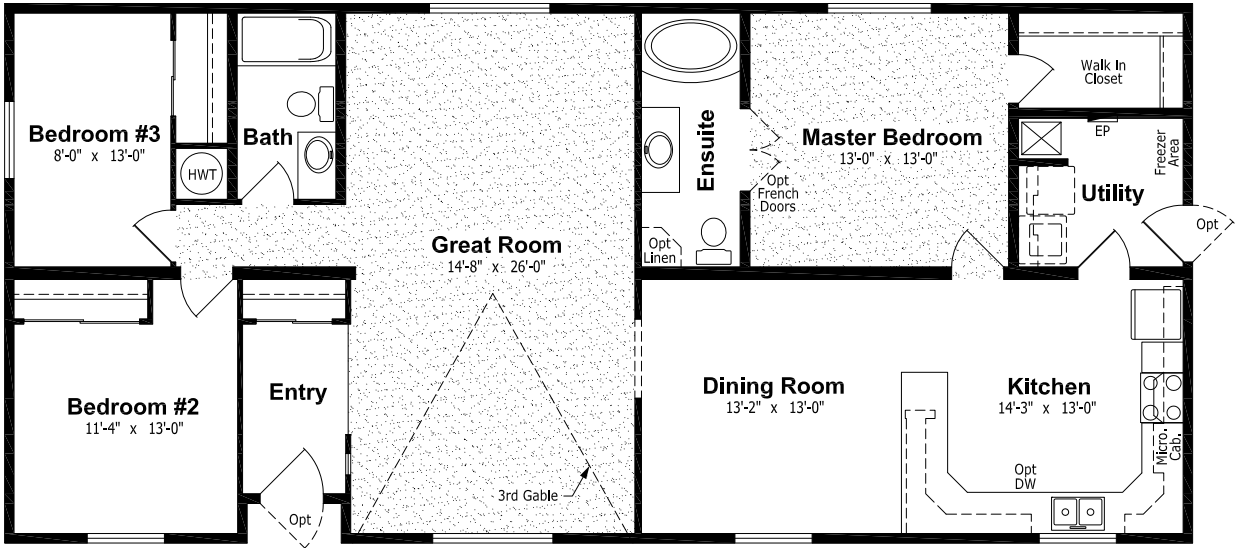
Optional Foundation Model



Optional Ensuite



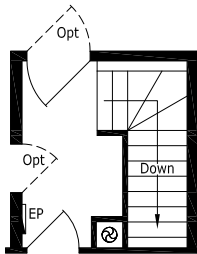
Stairway Location for Optional Foundation Model  
Optional exterior door required on foundation model.



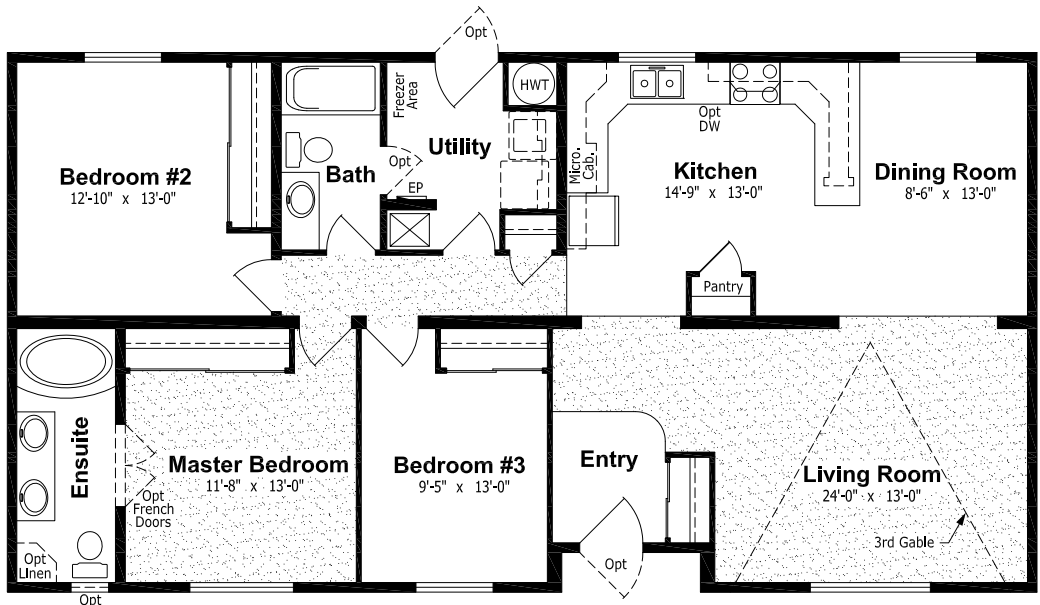
**SS-812A**

27'-6" x 52', 1,430 Sq. Ft.

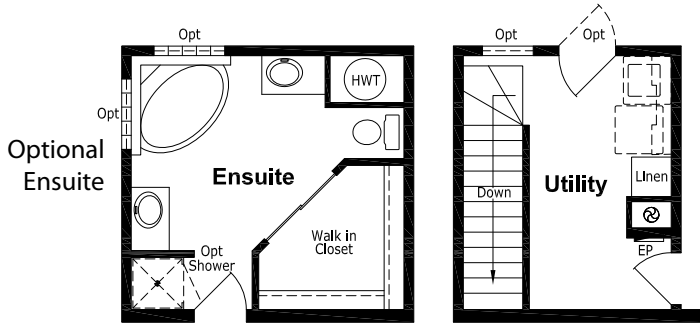
Optional Foundation Model



Stairway Location for  
Optional  
Foundation Model

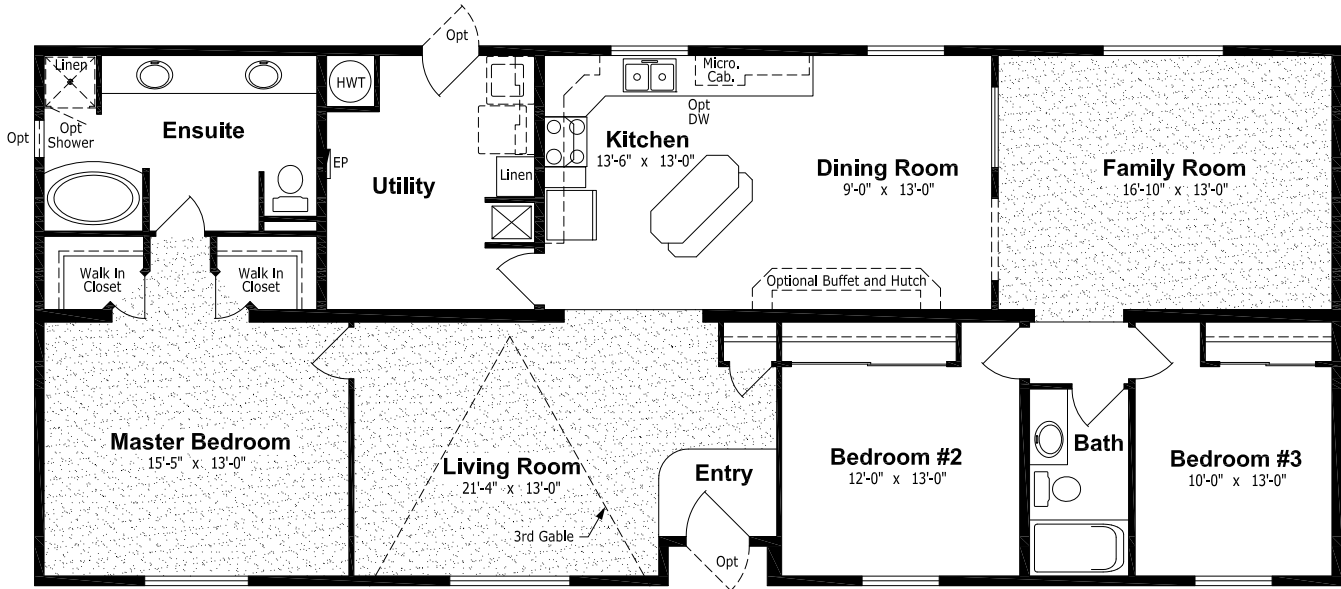


# Saville Chateau

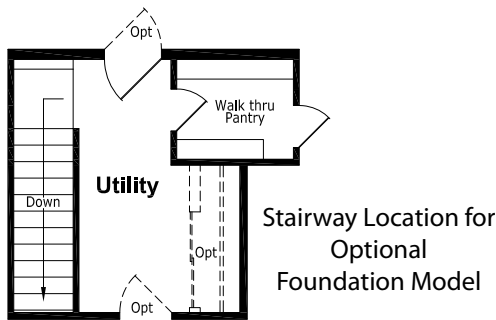


**SS-814A**  
 27'-6" x 66', 1,815 Sq. Ft.  
 Optional Foundation Model

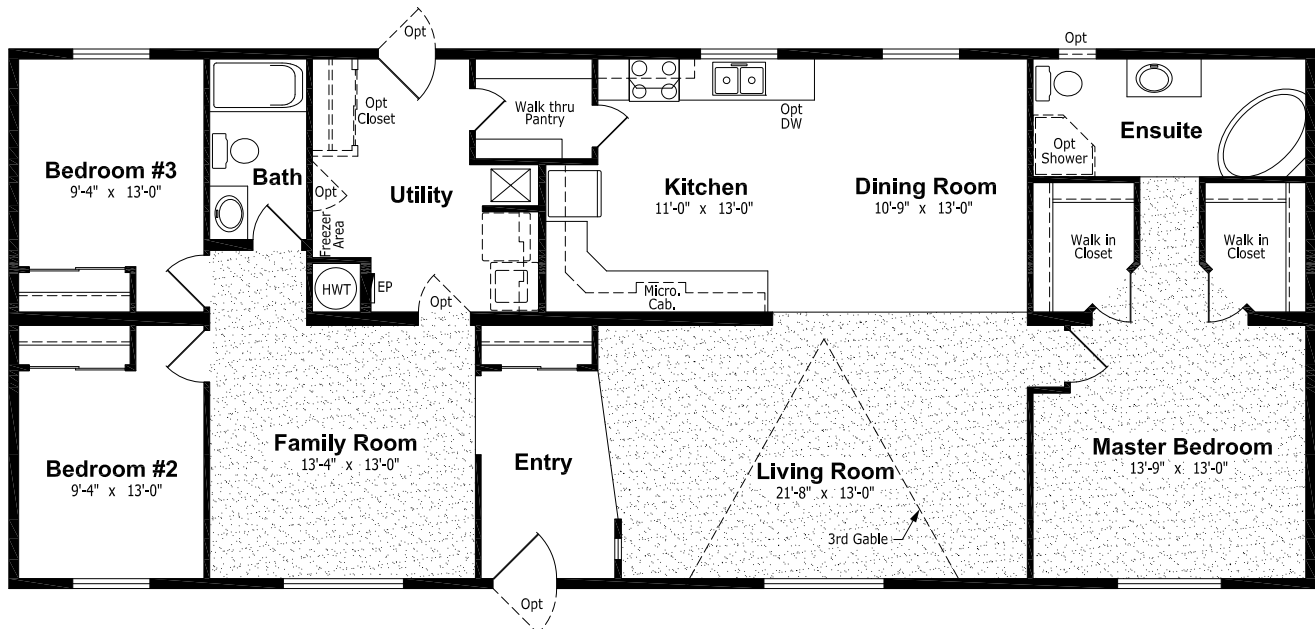
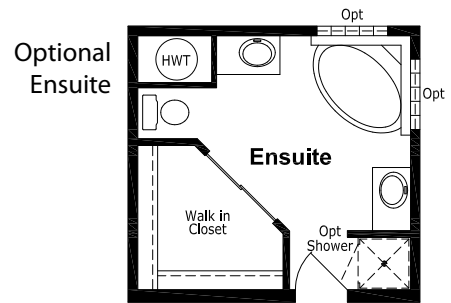
Stairway Location for  
 Optional  
 Foundation Model



**SS-820A**  
 27'-6" x 66',  
 1,815 Sq. Ft.  
 Optional  
 Foundation  
 Model



Stairway Location for  
 Optional  
 Foundation Model



## Exterior

- Exterior Gables
- Recessed Front Entry
- Vinyl Brick Siding
- Euro Pillars
- Diamond Cut Ceilings
- Three and Four Light Bay Windows
- Hextop Windows
- Octagon Windows
- Acrylic Block Windows
- Angle Corner Window
- White or Pewter Lattice in Windows
- Skylights
- Patio, Garden and Cottage Doors
- Exterior Door with Half Round, 9 Lite or Franklin Insert
- Turbine Vents
- Electric Door Chimes
- Exterior Recessed Pot Light(s)
- Extra Exterior G.F.I.
- High Snow Load Roof

## Interior

- Fully Finished Drywall
- Berber Carpeting
- Laminate Flooring
- Upgrade Vinyl Floor Coverings
- 2" Blinds
- French Doors
- Mirrored Closet Doors
- Freezer Cabinets
- Soak Sink with Cabinet
- Utility Room Door
- Ceiling Fan with Lights
- Upgrade Chandelier (Pewter)
- Recessed Fluorescent Lights
- Track Light with Dimmer
- Wall Sconce
- 4' Fluorescent Light - Ceiling Mount or Recessed
- Archways

## Kitchen

- Deluxe Oak, Maple or Cherry Cabinet Doors
- Solid Oak or Maple Raised Cabinet Doors
- Upper Glass Cabinet Doors
- Island Work Centre
- Appliance Garage
- Planning Centre
- Lazy Susan
- Granite Composite Upgrade Sink
- Oak or Maple Counter Edging
- Black Appliances
- Built-In Dishwasher
- Combination Microwave/Range Hood
- Eye Level Oven and Cook Top Range
- Self Cleaning Range
- Two Door Side by Side Refrigerator
- Handi-Hite Bottom Mount Refrigerator

## Bathroom

- Jetted One Piece Tub and Shower
- Oval Tub (Jetted)
- 2 Person Jetted Tub
- 36", 48" or 60" Shower c/w Glass Doors
- Handicap Toilet
- Tri-Mirror Medicine Cabinet
- Grab Bars
- Deluxe Shower Curtain
- Banjo Countertop on Vanity

## Utilities

- Gas Fireplace c/w Air Circulating Fan
- Home Theatre Package
- Electric Water Heater
- Forced Air Electric Furnace with 200 amp. Electrical Service
- Air Conditioner-Ready Furnace
- Washer and Dryer
- Stacking Washer and Dryer
- Central Vacuum System
- Roughed in for Central Vacuum
- 200 Amp Service Panel
- Extra Telephone Jack(s)



# Optional Features



# Saville Chateau



MHI Canada

Intertek

Authorized Retailer:

131 Stubb Ross Road . Lethbridge . Alberta T1K 7N3

[www.regenthomes.ca](http://www.regenthomes.ca)

This is not a fully detailed specification. SRI Homes ULC reserves the right to change specifications, designs, materials and suppliers without notice and without incurring obligation. Information contained herein is from data available at the time of printing. Photos and renderings may show optional features. Printed in Canada, December 2009.