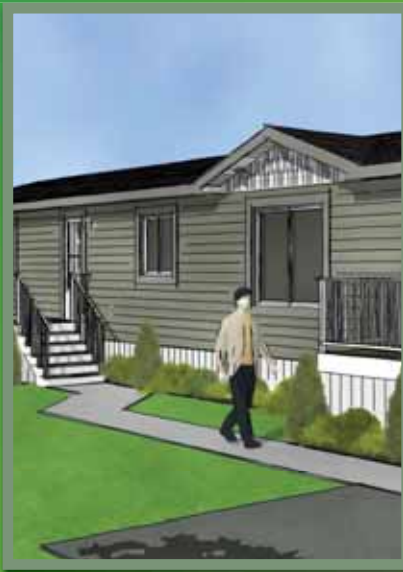




Proudly made in
Canada
to Canadian
Standards

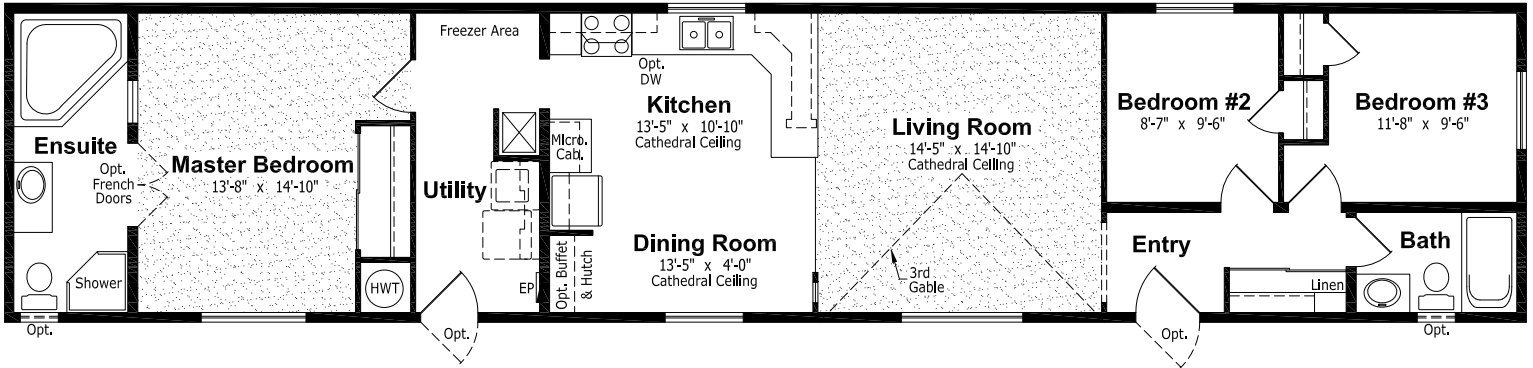
SAVILLE ROYALE



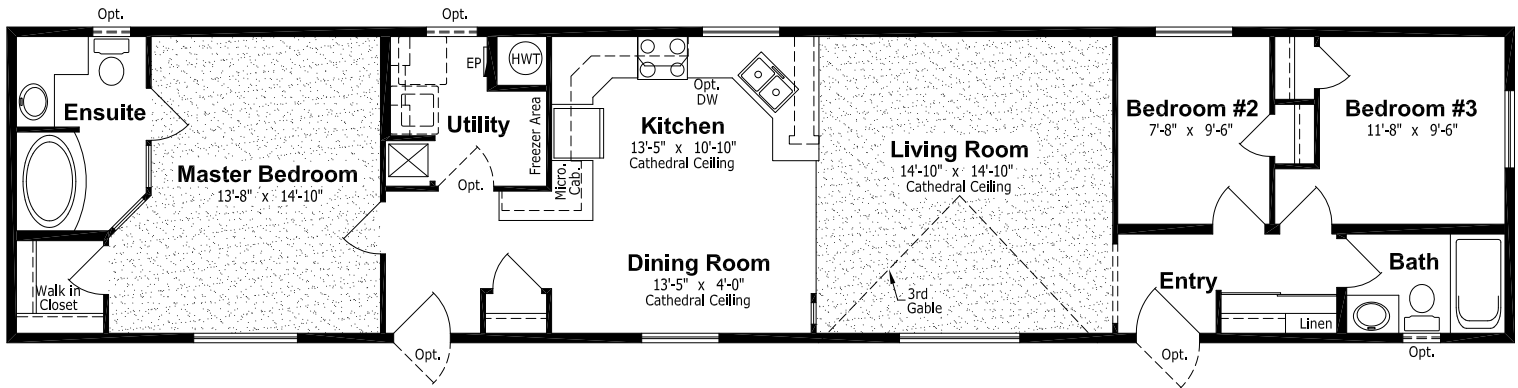
16' Wide Homes



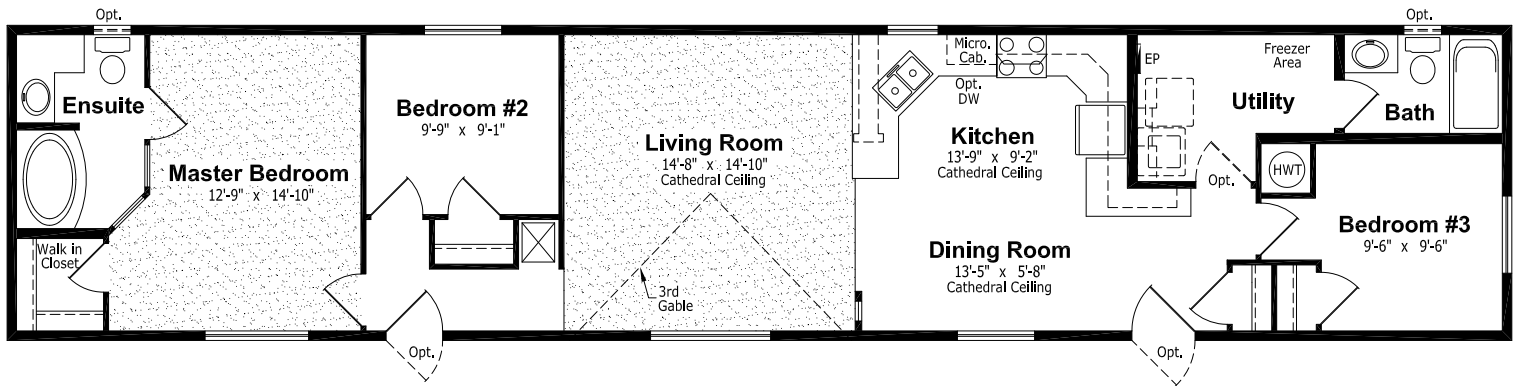
SR-602B, 16' x 76', 1,216 sq. ft.



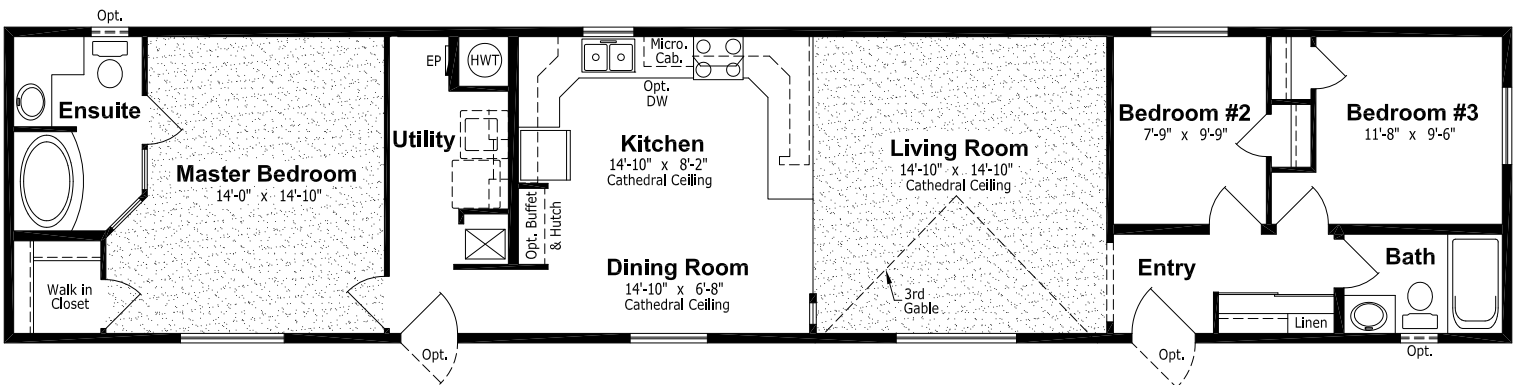
SR-604A, 16' x 76', 1,216 sq. ft.



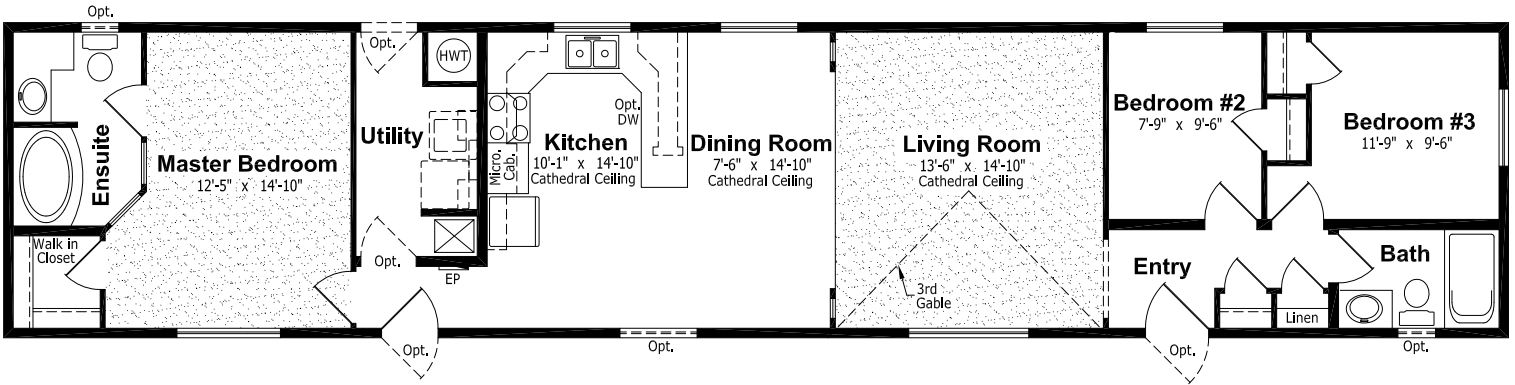
SR-606A, 16' x 76', 1,216 sq. ft.



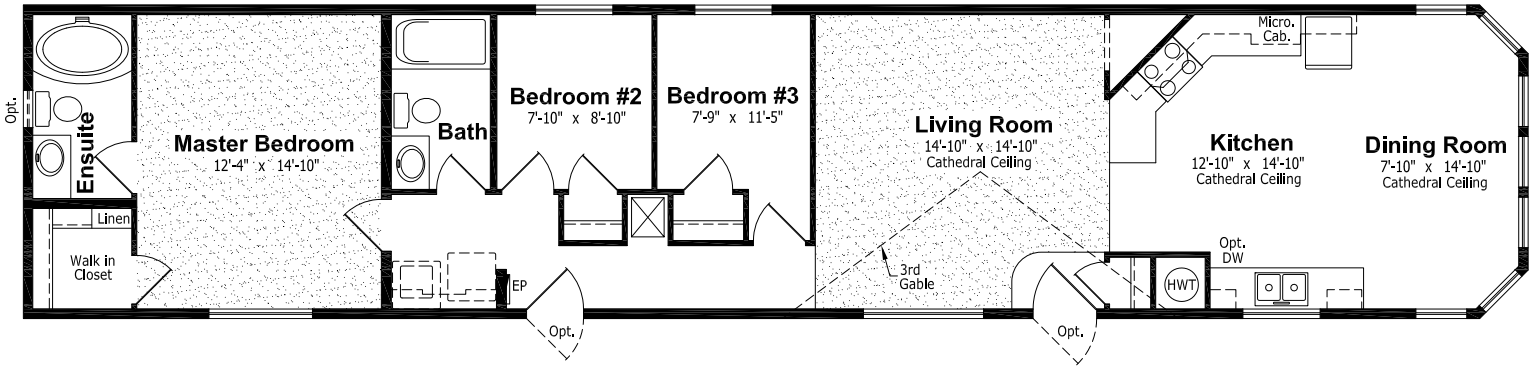
SR-608B, 16' x 76', 1,216 sq. ft.



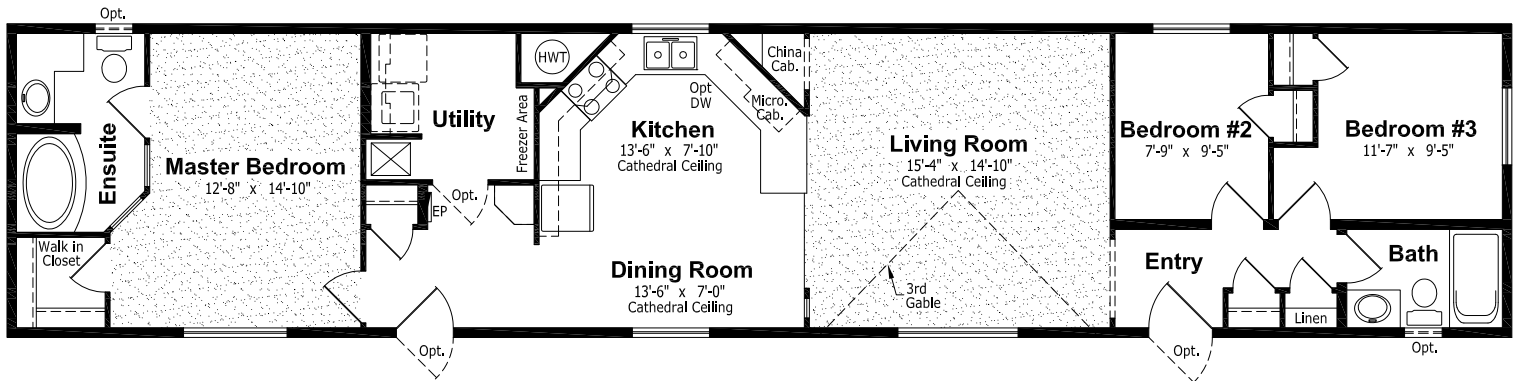
SR-612A, 16' x 76', 1,216 sq. ft.



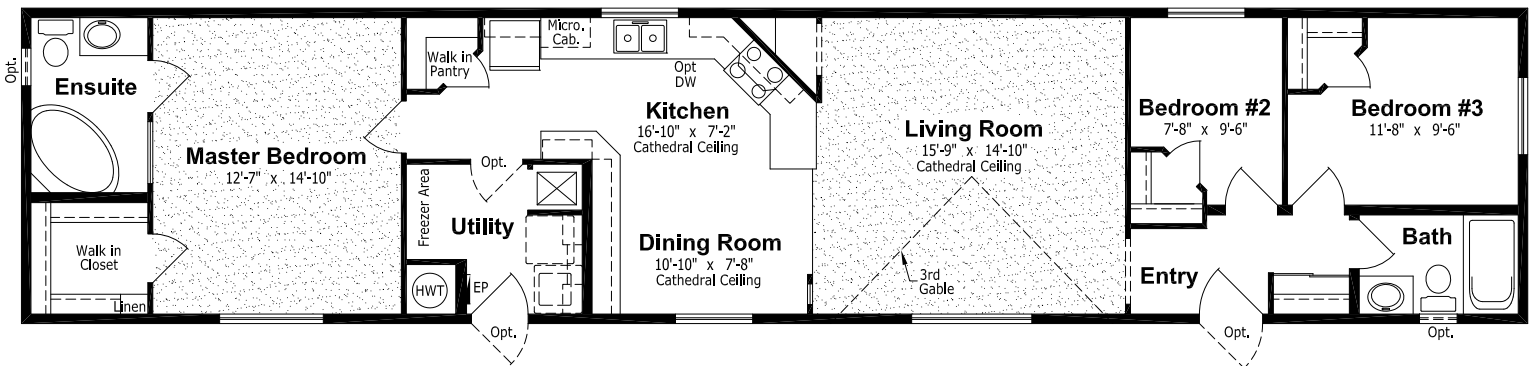
SR-614A, 16' x 76', 1,216 sq. ft.



SR-616A, 16' x 76', 1,216 sq. ft.



SR-622A, 16' x 76', 1,216 sq. ft.



STANDARDS AND SPECIFICATIONS

Exterior

- ◆ Vinyl Siding and Corners
- ◆ Painted Wood Fascia
- ◆ Shakes in End Gable and Side Gables with Knee Brace Accent
- ◆ Gable over Living Room Window
- ◆ Stone Accents on 2 Corners (Hitch End)
- ◆ Long life Shingle Roof
- ◆ 4/12 Pitch Roof
- ◆ 36" Insulated Steel Exterior Door at Front and 32" Insulated Steel Exterior at Rear; both with Peepholes and Deadbolts
- ◆ 2x6 Exterior Walls with Belt Rails
- ◆ 2x10 Floor Joists-16" o.c.
- ◆ Engineered Roof Trusses
- ◆ Residential Eaves on 4 Sides
- ◆ Exterior GFI at Front Door
- ◆ Exterior Frost Free Tap
- ◆ Coach Lights at All Exterior Doors
- ◆ PVC Windows complete with Screens
- ◆ Separate Receptacle for Heat Tape

Interior

- ◆ Cathedral Ceiling in Living Room, Dining Room and Kitchen
- ◆ Decorative Vinyl Covered Drywall
- ◆ Decorative Glass Divider Wall (Most Models)
- ◆ Insulation Values=R-34 in Ceiling, R-20 in Side Walls and R-28 in Floors
- ◆ 5/8" Subfloor-Glued, Nailed and Screwed
- ◆ Stainmaster Carpeting in Living Room and Master Bedroom
- ◆ Quality Vinyl Floor Covering Elsewhere
- ◆ Colour Coordinated Window Valances with 2" blinds; Valance and Side Drapes in Living Room
- ◆ Pewter Hardware, Lighting and Plumbing Fixtures
- ◆ White Receptacles and Light Switches
- ◆ Ceiling Lights in all Bedrooms
- ◆ Solid Shelving in all Closet

Kitchen

- ◆ 18 cu. ft. Frost Free Refrigerator
- ◆ 30" Electric Range with Clock and Timer
- ◆ 2-Speed White Rangehood Fan with Light-Vented to Exterior
- ◆ White Appliances - Black Optional
- ◆ Deluxe Raised Panel Modular Cabinets with Backs and Soft Close Hinges
- ◆ Crown Moulding on Kitchen Cabinets
- ◆ Laminated Countertops with 4" Laminated Backsplash with bullnose
- ◆ Microwave Cabinet with Separate Circuit
- ◆ Double Stainless Steel Sink
- ◆ Plumbed and Wired for Dishwasher
- ◆ Light in Walk-In Pantry
- ◆ Single Lever Faucet with Vegetable Sprayer

Bathroom

- ◆ Walled Tub/Shower Complete with Single Lever Pressure Balance Faucet in All Bathrooms
- ◆ Shower Head, Shower Rod and Shower Curtain Included in All Baths
- ◆ Exhaust Fan complete with Humidistat in Main Bath
- ◆ Exhaust Fan in Ensuite on Separate Switch
- ◆ Cosmetic box in Main Bath
- ◆ 3 Bulb Deluxe Light Fixture in all Baths
- ◆ Single Lever Faucets in all Baths
- ◆ GFI Receptacle

Utilities

- ◆ 33 Imperial Gallon (40 U.S. Gallon) Natural Gas Water Heater
- ◆ Natural Gas Furnace with Electronic Ignition
- ◆ Electric Smoke Detector(s)
- ◆ Plumbed and Wired for Washer/Dryer
- ◆ 100 amp. Service Panel
- ◆ Electric Conduit through Floor

OPTIONAL FEATURES

Exterior

- Storm Doors
- Euro and Century Pillars
- Diamond Cut Ceilings
- Three and Four Light Bay Windows
- Palladian Windows
- Octagon Windows
- Acrylic Block Windows
- Angle Corner Window
- Brass, White or Pewter Lattice in Windows
- Skylights
- Garden, Cottage or Patio Doors
- Storm Doors
- Exterior Door with Half Round, 9 Lite or Franklin Insert
- Turbine Vents
- Electric Door Chimes
- Exterior Recessed Pot Light(s)
- Extra Exterior GFI
- High Snow Load Roof

Interior

- Fully Finished Drywall
- Laminate Flooring
- Upgrade Vinyl Floor Coverings
- Berber Carpeting
- Chair Rail
- French Doors

Interior (Cont'd)

- Mirrored Closet Doors
- Freezer Cabinets
- Soak Sink with Cabinet
- Utility Room Door
- Ceiling Fan with Lights
- Chandeliers
- Recessed Fluorescent Lights
- Archways

Utilities

- Gas Fireplace c/w Fan
- Forced Air Electric Furnace
- Air Conditioner-Ready Furnace
- Washer and Dryer
- Stacking Washer and Dryer
- Central Vacuum System
- Roughed in for Central Vacuum
- 200 Amp Service Panel
- Extra Telephone Jack(s)

Authorized Retailer:

Kitchen

- Shaker, Monterrey or Montana style Cabinet Doors in Tara Oak, Olympic Oak, Maple or Cherry
- Raised Panel PVC Cabinet Doors
- Upper Glass Cabinet Doors
- Island Work Centre
- Appliance Garage
- Planning Centre
- Lazy Susan
- White or Black Sink
- Oak or Maple Counter Edging
- Corian Executive Counter Edging
- Built-In Dishwasher
- Combination Microwave/Range Hood
- Eye Level Oven and Cook Top Range
- Self Cleaning Range
- Two Door Side by Side or Free Standing Bottom Mount Refrigerator

Bathroom

- Corner Oval Jetted Tub
- 60" Shower c/w Glass Doors
- Handicap Toilet
- Tri-Mirror Medicine Cabinet
- Grab Bars
- Deluxe Shower Curtain
- Banjo Countertop on Vanity

**Plus many more -
Check with your Retailer**